

# LAGEPLAN

OVERVIEW

## ÜBERSICHT APARTMENTS

*/overview apartments*

**Stiege 1 /stairs 1**  
Alpen 1.1 - Alpen 1.5

**Stiege 2 /stairs 2**  
Alpen 2.1 - Alpen 2.3

**Stiege 3 /stairs 3**  
Alpen 3.1 - Alpen 3.4

**Stiege 4 /stairs 4**  
Alpen 4.1 - Alpen 4.3

**Stiege 5 /stairs 5**  
Alpen 5.1 - Alpen 5.5

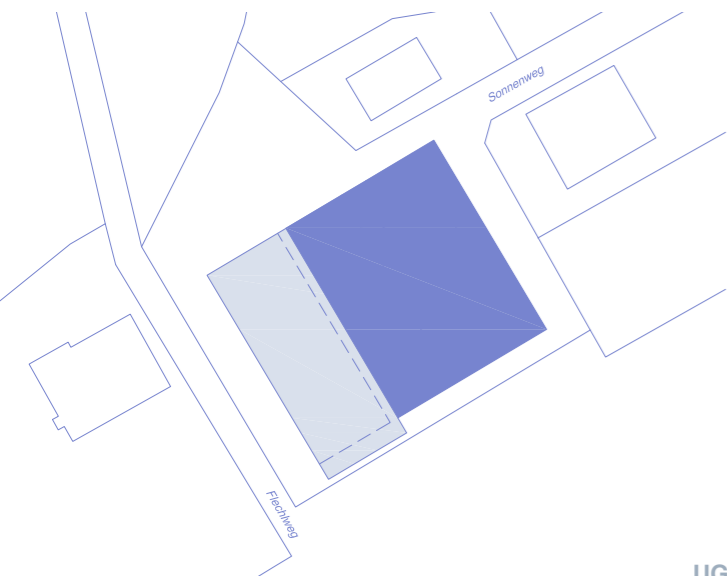
**Stiege 6 /stairs 6**  
Alpen 6.1 - Alpen 6.4



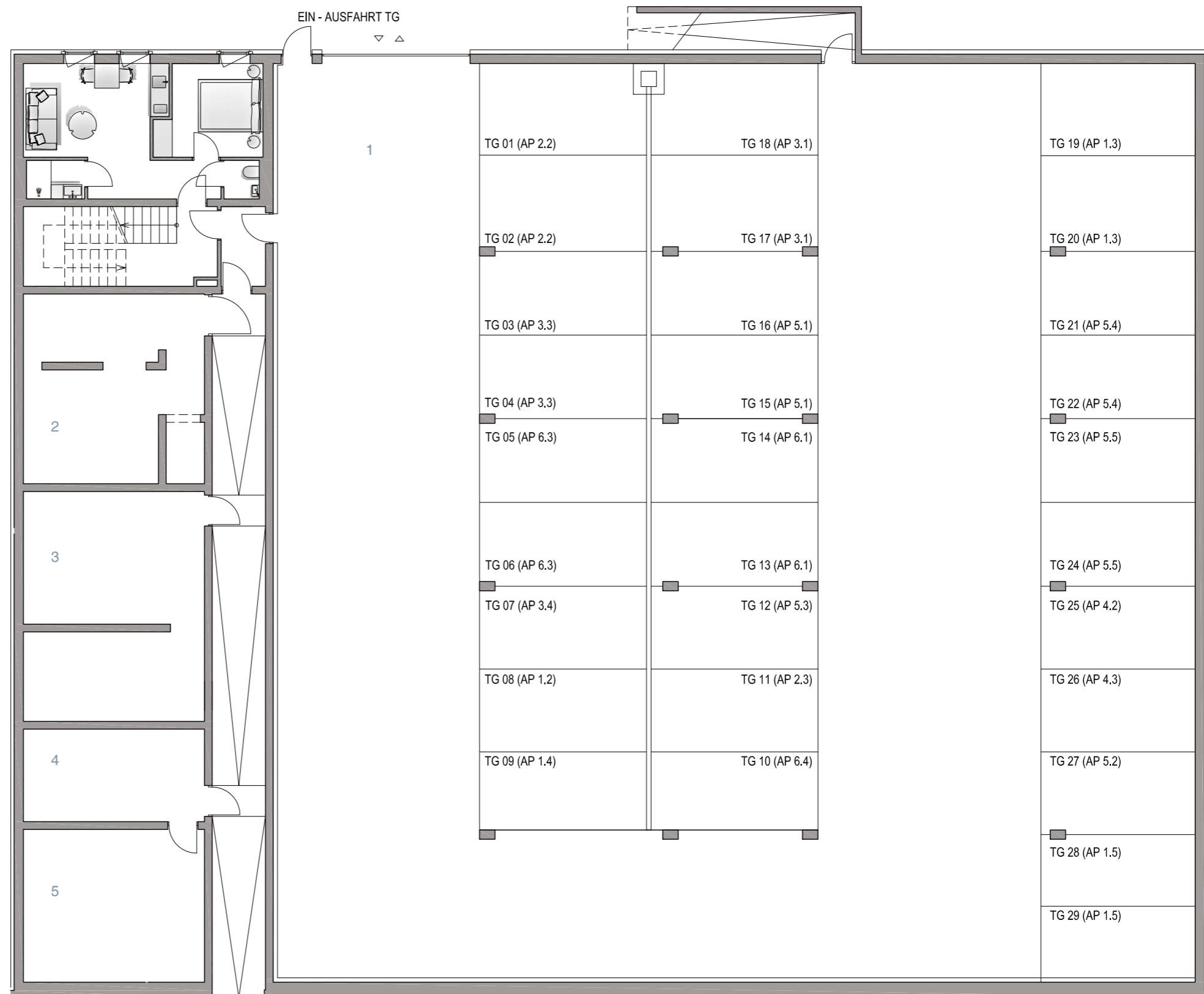
# GARAGE

- 1 Garage /garage 881,51 m<sup>2</sup>
- 2 Technik-Heizraum /staircase 34,75 m<sup>2</sup>
- 3 Ski-Schuhraum /ski-shoeroom 42,54 m<sup>2</sup>
- 4 Fahrradraum 1 /bikeroom 1 17,61 m<sup>2</sup>
- 5 Fahrradraum 2 /bikeroom 2 29,06 m<sup>2</sup>

Gesamt /total 1005,47 m<sup>2</sup>



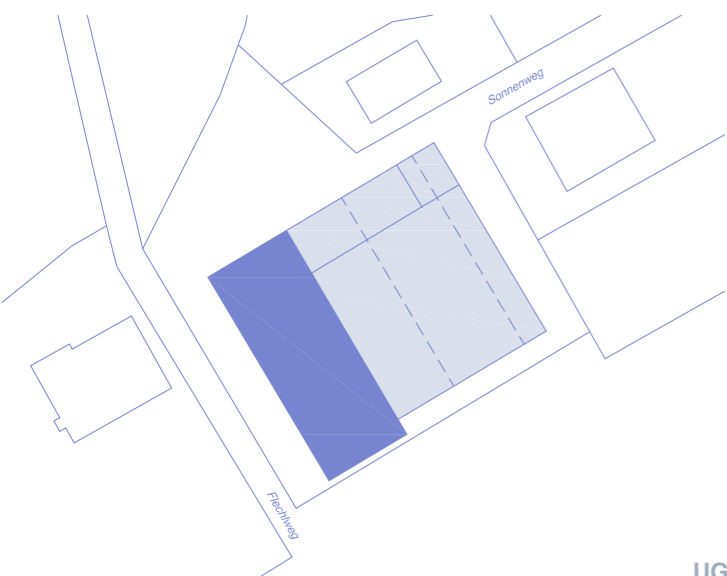
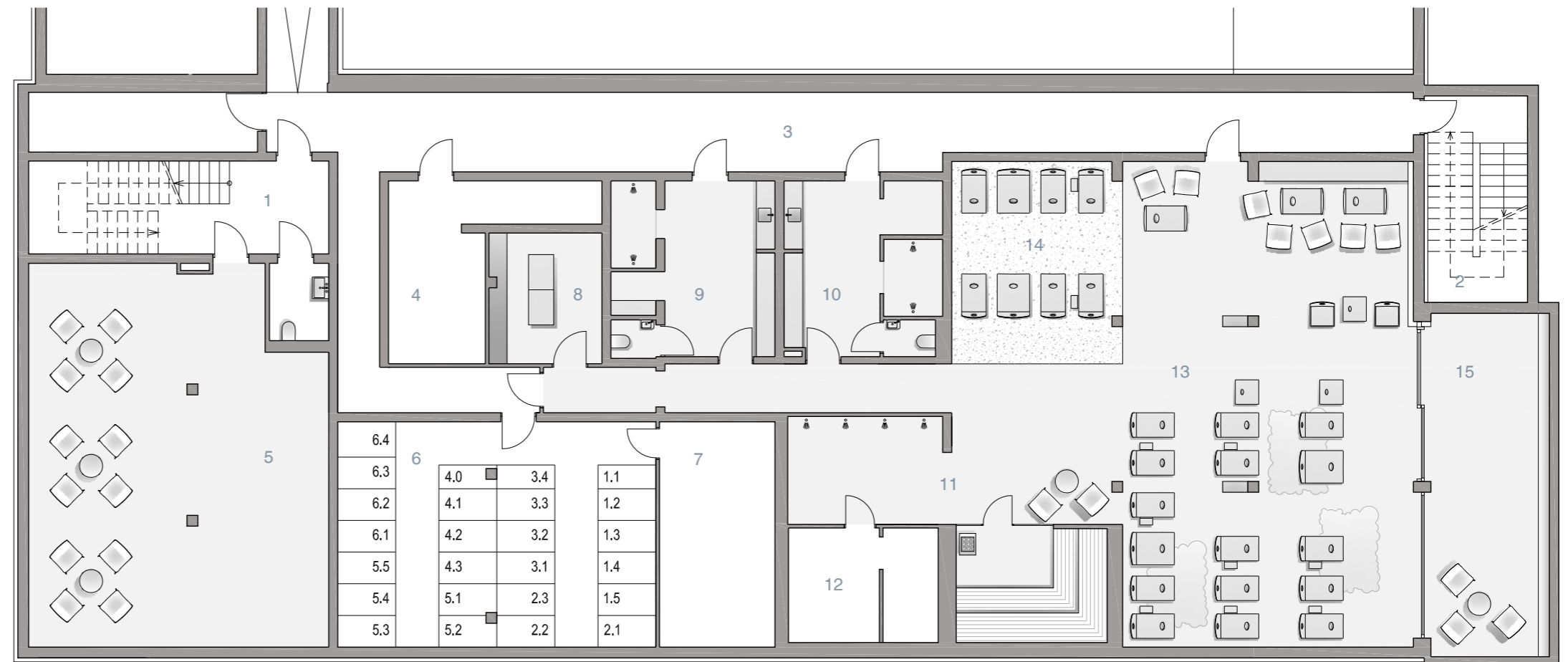
UG  
/basement



# WELLNESS

- 1 Stiegenhaus /staircase 16,48 m<sup>2</sup>
- 2 Fluchtstiege /emergency stairs 16,00 m<sup>2</sup>
- 3 Gang /hallway 62,28 m<sup>2</sup>
- 4 Lager /storage 17,39 m<sup>2</sup>
- 5 Spielraum /leisure room 84,66 m<sup>2</sup>
- 6 Kellerabteile /cellar 55,34 m<sup>2</sup>
- 7 Technikraum /technical room 19,97 m<sup>2</sup>
- 8 Massageraum /massageroom 11,33 m<sup>2</sup>
- 9 Duschen/ Umkleide 1 /shower 19,97 m<sup>2</sup>
- 10 Duschen/ Umkleide 2 /shower 18,90 m<sup>2</sup>
- 11 Saunabereich /sauna 41,55 m<sup>2</sup>
- 12 Abstellraum /storeroom 14,27 m<sup>2</sup>
- 13 Ruheraum 1 /chill-out room 108,10 m<sup>2</sup>
- 14 Ruheraum 2 /chill-out room 32,91 m<sup>2</sup>
- 15 Ruheraum - Terrasse /terrace 28,48 m<sup>2</sup>

Gesamt /total 516,33 m<sup>2</sup>



UG  
/basement

