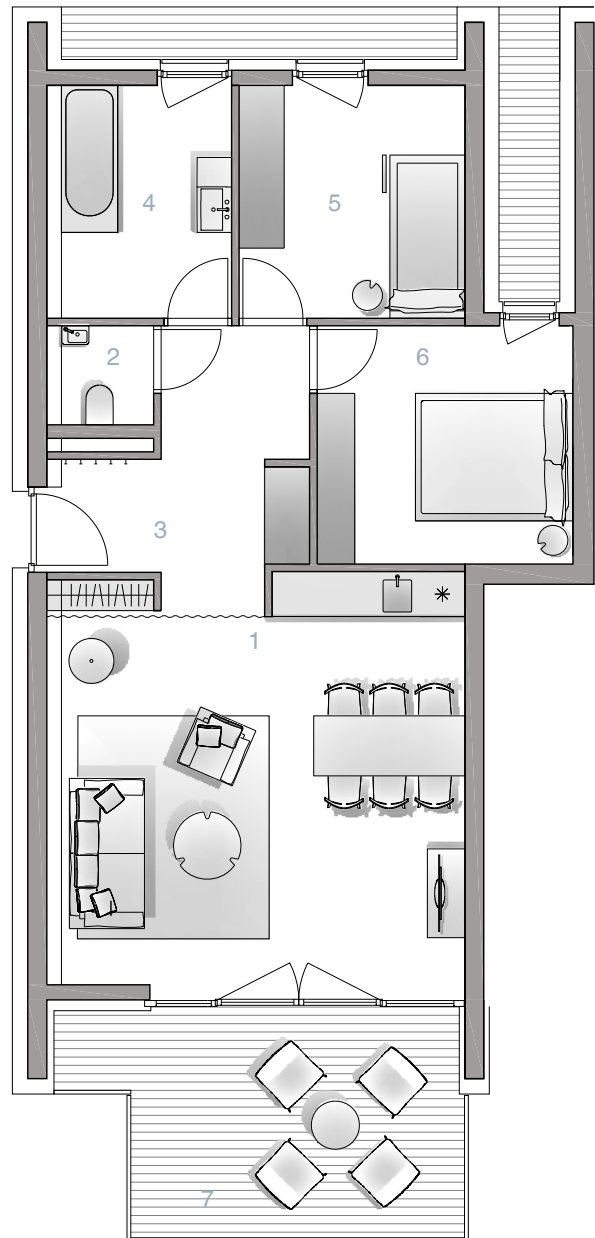


# ALPEN 5.5

1	Wohn-Ess-Küche <i>/living-diningroom-kitchen</i>	29,61 m <sup>2</sup>
2	WC <i>/toilet</i>	1,65 m <sup>2</sup>
3	Vorraum <i>/anteroom</i>	9,13 m <sup>2</sup>
4	Bad <i>/bathroom</i>	6,99 m <sup>2</sup>
5	Zimmer <i>/bedroom</i>	9,35 m <sup>2</sup>
6	Schlafzimmer <i>/bedroom</i>	10,67 m <sup>2</sup>
Gesamt <i>/total</i>		67,40 m <sup>2</sup>
7	Balkon <i>/balcony</i>	14,53 m <sup>2</sup>



2OG Stiegenhaus 5  
*/2nd floor staircase 5*

