

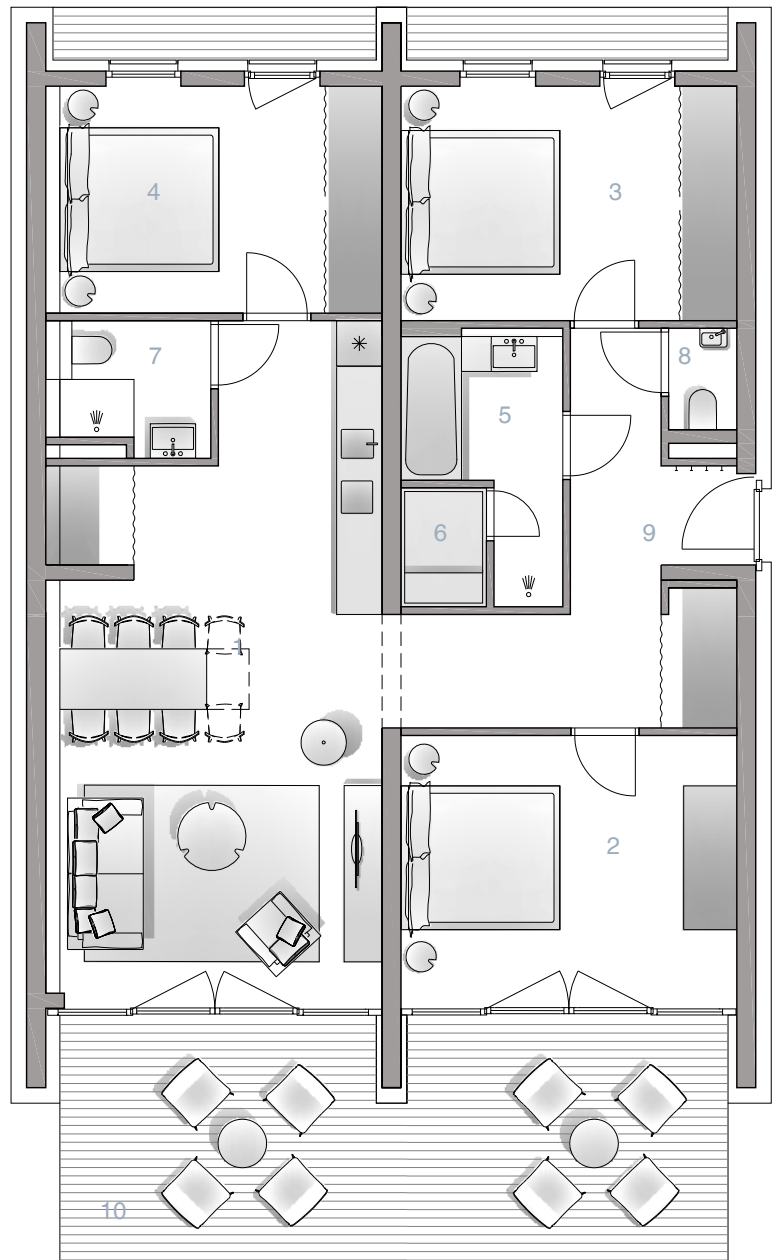
ALPEN 5.1

1	Wohn-Ess-Küche <i>/living-diningroom-kitchen</i>	34,48 m ²
2	Schlafzimmer 1 <i>/bedroom</i>	16,01 m ²
3	Schlafzimmer 2 <i>/bedroom</i>	13,76 m ²
4	Schlafzimmer 3 <i>/bedroom</i>	12,77 m ²
5	Bad <i>/bathroom</i>	5,61 m ²
6	Sauna	1,78 m ²
7	Bad-WC <i>/bathroom-toilet</i>	3,35 m ²
8	WC <i>/toilet</i>	1,21 m ²
9	Vorraum <i>/anteroom</i>	13,3 m ²
Gesamt <i>/total</i>		102,27 m ²
10	Terrasse <i>/terrace</i>	27,76 m ²
11	Garten <i>/garden</i>	44,35 m ²



EG Stiegenhaus 5
/ground floor staircase 5





11

